

ARM ASR PI MEETING



# OPEN INSTRUMENT SCIENCE IN CROCUS AND HOW IT CAN HELP ARM



**SCOTT COLLIS**

Lead – CROCUS Measurements, Co-Investigator - Sage

**ALSO HERE: BOBBY JACKSON, JOE O'BRIEN, MAX GROVER, BHUPENDRA RAUT,  
PAYTSAR MURADYAN, SUJAN PAL**

**ON BEHALF OF TEAM CROCUS AND TEAM SAGE**

August 9th 2023  
Bethesda, MD, USA

# THE LEDE

## CROCUS as an open science incubator.

- CROCUS and ARM share many similar measurements.
- By being open CROCUS aims to write the blueprint for urban science.
- CROCUS includes hardware and edge computing.
- CROCUS can help with R2O for ARM.



**CROCUS**  
Community Research on  
Climate & Urban Science



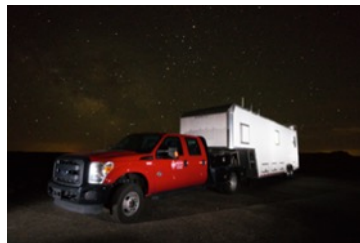
# MEASUREMENT STRATEGY

Four components: Micronet, field campaigns, public data & citizen science.

Chicago Micronet  
Network of 21 observatories.



Field campaigns, bringing the  
most advanced  
instrumentation to Chicago.

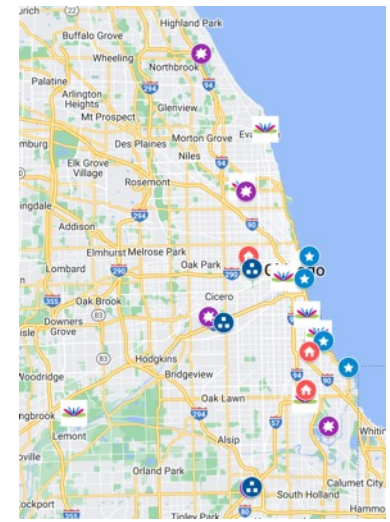


Students involved  
throughout! Developing  
the diverse workforce of  
the future.

# THE CHICAGO MICRONET

## Understanding variability across the city.

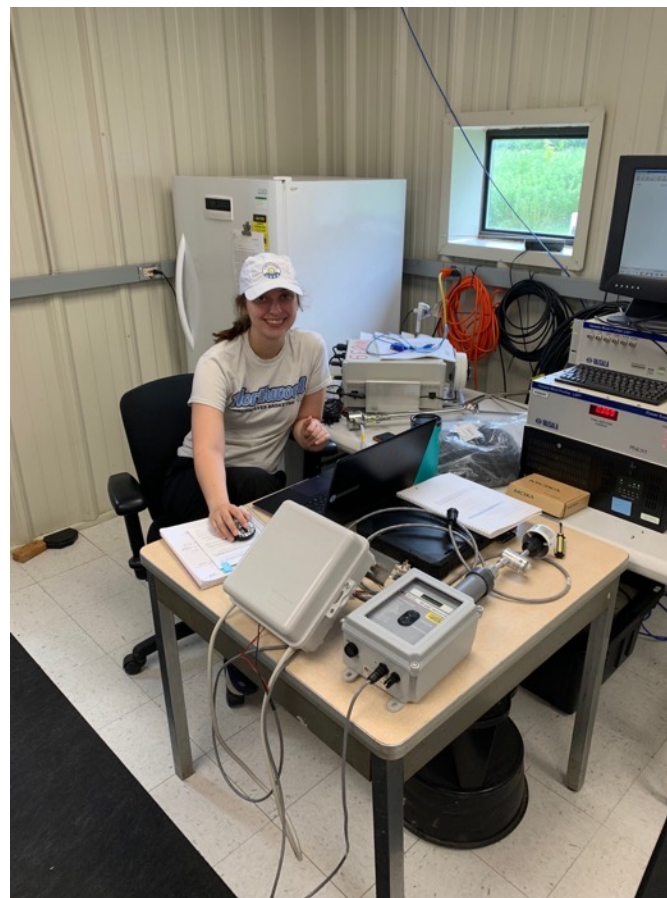
- A network of 21 sites across Chicago.
- Three levels of complexity. All have air quality and meteorology, four will have LIDARs giving vertical structure. Two will have radars for precipitation.
- Work horse sensors at the Vaisala AQT and WXT. These have a serial interface and are calibrated. The AQT gives information about particulate matter and precursor gasses. The WXT gives high frequency meteorology up to 10Hz.



# CROCUS IS OPEN

## Writing The Blueprint For Urban Science.

- CROCUS touches the full science lifecycle and beyond.
- This allows us (us being open science advocates) to expand beyond data and code and look at hardware.
- CROCUS is built on Waggle hardware and Sage cyberinfrastructure.
- This allows us to publish instrument codes on the Sage Edge Code Repository.



# CROCUS IS OPEN

## Writing The Blueprint For Urban Science.

- CROCUS touches the full science lifecycle and beyond.
- This allows us (us being open science advocates) to expand beyond data and code and look at hardware.
- CROCUS is built on Waggle hardware and Sage cyberinfrastructure.
- This allows us to publish instrument codes on the Sage Edge Code Repository.



# CROCUS IS OPEN

## Writing The Blueprint For Urban Science.

- CROCUS touches the full science lifecycle and beyond.
- This allows us (us being open science advocates) to expand beyond data and code and look at hardware.
- CROCUS is built on Waggle hardware and Sage cyberinfrastructure.
- This allows us to publish instrument codes on the Sage Edge Code Repository.



**rjackson / mrr2**

Plugin for transferring and processing Micro Rain Radar 2 data

<https://portal.sagecontinuum.org/apps/explore>



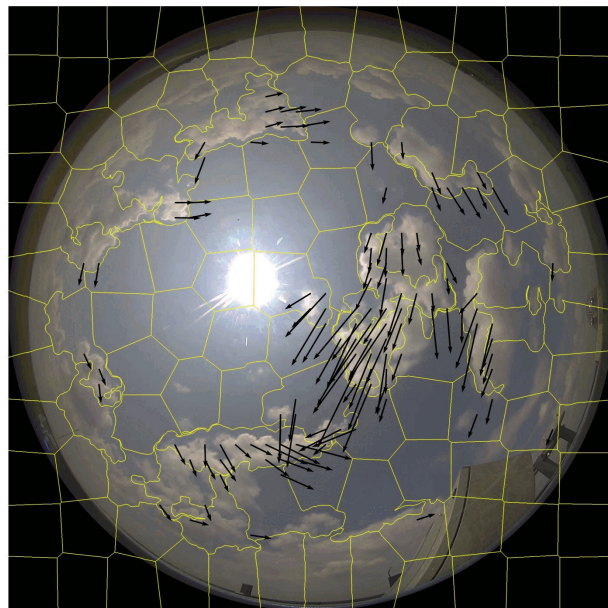
**bhupendraraut / cloud-motion**

Cloud Motion Estimator (Optical Flow) for the Sky Camera. Uploads images occasionally.

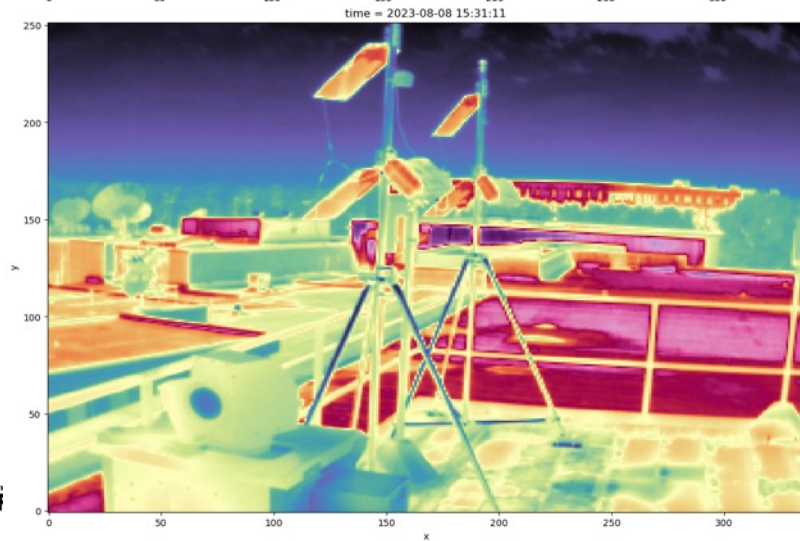
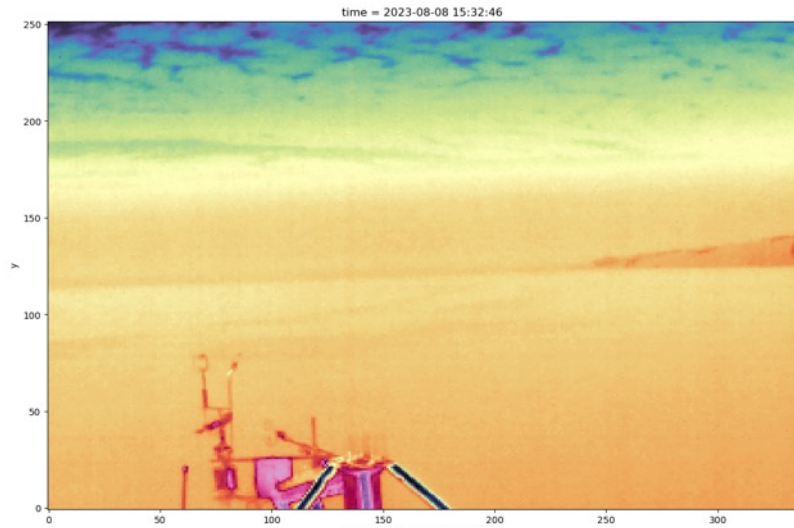
# CONTRIBUTING AND USING OPEN SCIENCE

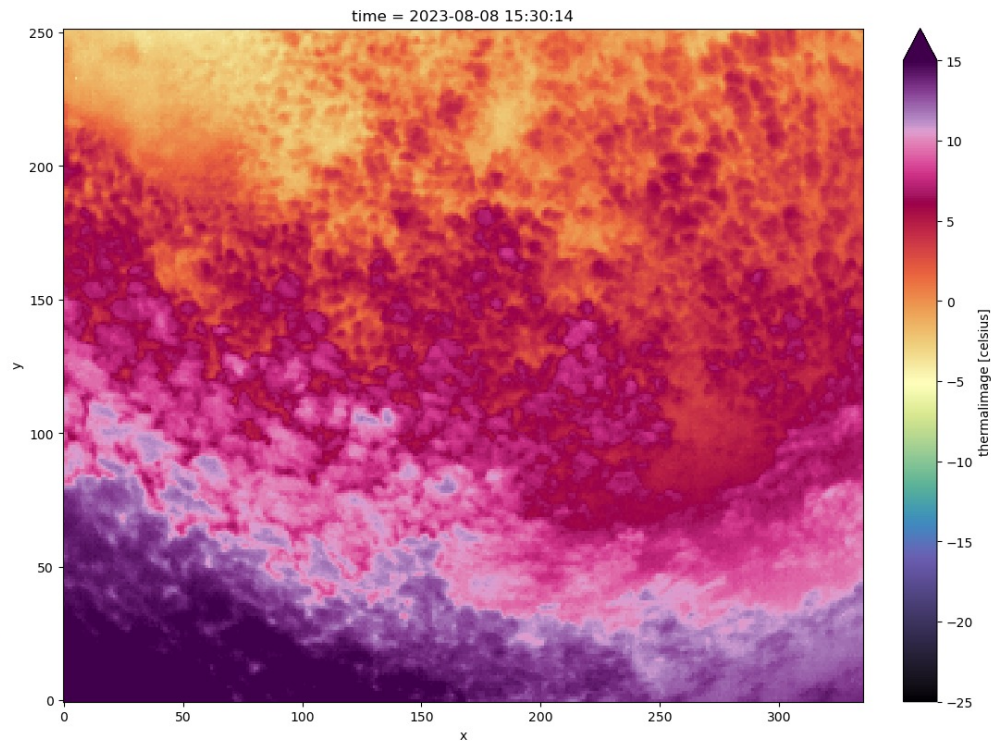
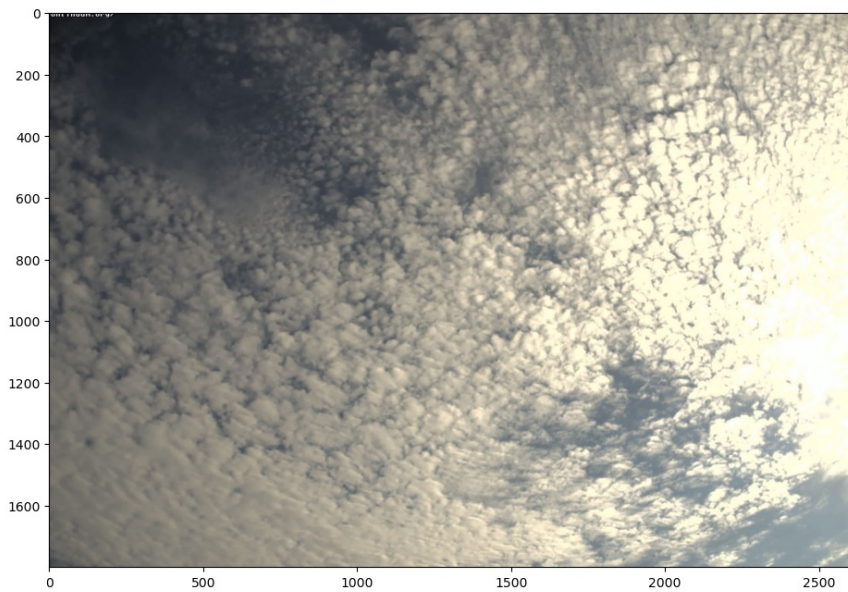
By using Waggle hardware and Sage CI we get access to apps. These same apps can run on ARM.

- We are already using some of the apps in the edge code repository for CROCUS.
- Any apps we write can also be run on Waggle nodes at EPCAPE and the SGP.
- We have apps in development for working with CL-61 data, MRR and beyond.









# COOKBOOKS

## And a JupyterHub is coming.

- As we develop ingests, quicklooks and head on into science we publish code as cookbooks.
- These help kickstart others using our data (coming to a THREDDS server near you).
- We are also using these for our workforce development efforts.





[https://portal.sagecontinuum.org/query-browser?nodes=W08D&apps=registry.sagecontinuum.org%2Fjrobrien%2Fwaggle-aqt%3A0.23.5.04.\\*&start=2023-08-08T05%3A01%3A00.000Z&window=2d&names=aqt.particle.pm2.5](https://portal.sagecontinuum.org/query-browser?nodes=W08D&apps=registry.sagecontinuum.org%2Fjrobrien%2Fwaggle-aqt%3A0.23.5.04.*&start=2023-08-08T05%3A01%3A00.000Z&window=2d&names=aqt.particle.pm2.5)



# CROCUS

Community Research on  
Climate & Urban Science



This material is based upon work supported by the U.S. Department of Energy, Office of Science, Office of Biological and Environmental Research's Urban Integrated Field Laboratories research activity under contract number DE-AC02-06CH11357